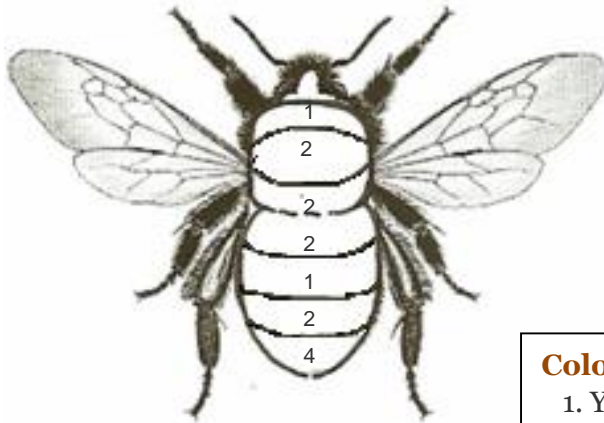




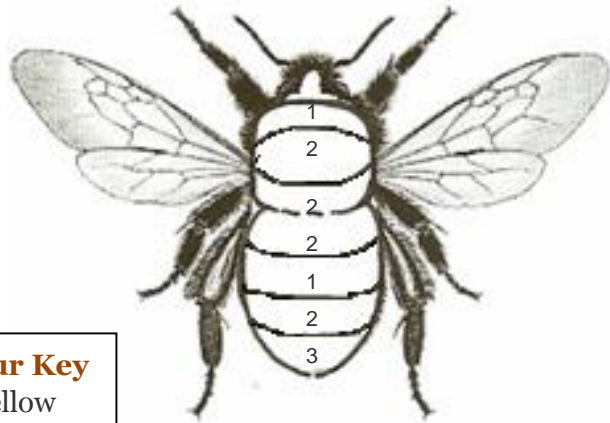
## Have you ever seen different coloured bumblebees?

These are different types (species).

Colour in these bumblebees (using the colour key) to see some differences.



White-tailed  
Bumblebee



Early  
Bumblebee

### Colour Key

1. Yellow
2. Black
3. Red
4. White

## Bumblebee Facts

- Bumblebees are a type of **insect** - a small animal with six legs (and no bones - **skeleton**).
- Bumblebees have hair on their bodies to keep them warm.
- Bumblebees live in nests in the ground or in piles of old leaves.
- Each nest has a mother bee (the **Queen**), lots of daughter bees (**workers**) and a few sons (**drones**).
- In winter, all the bees die except the Queens who sleep (**hibernate**) through the cold weather.
- In the spring, the Queens wake up and go looking for a nest. Then they lay eggs to start a new family (a **colony**).
- Only female bumblebees can sting, but they hardly ever do - unless you frighten them.

## Can you find these words in the puzzle?

- |        |           |
|--------|-----------|
| Insect | Nest      |
| Fur    | Wings     |
| Buzz   | Hibernate |
| Tongue | Queen     |
| Worker | Drone     |

s	a	r	h	i	n	s	e	c	t
b	u	z	z	n	w	o	r	k	o
r	i	s	a	e	o	l	r	p	n
d	o	r	m	j	r	x	n	c	g
f	c	e	v	m	k	f	r	x	u
t	d	r	o	n	e	t	w	a	e
s	x	l	f	u	r	x	c	b	g
q	u	e	e	n	y	n	e	s	t
u	h	i	b	e	r	n	a	t	e
w	i	n	g	s	l	i	g	r	n





**You can really help bumblebees by planting flowers at school or at home.**  
Add some flowers and bumblebees to this picture and colour it in.



### Some more bumblebee-friendly flowers



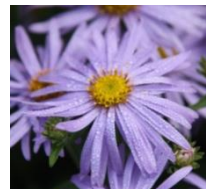
Coneflowers



Dahlia



Nasturtium



Michaelmas daisy



Red clover



Busy bees activity sheets  
are produced thanks to  
the generous support of:

